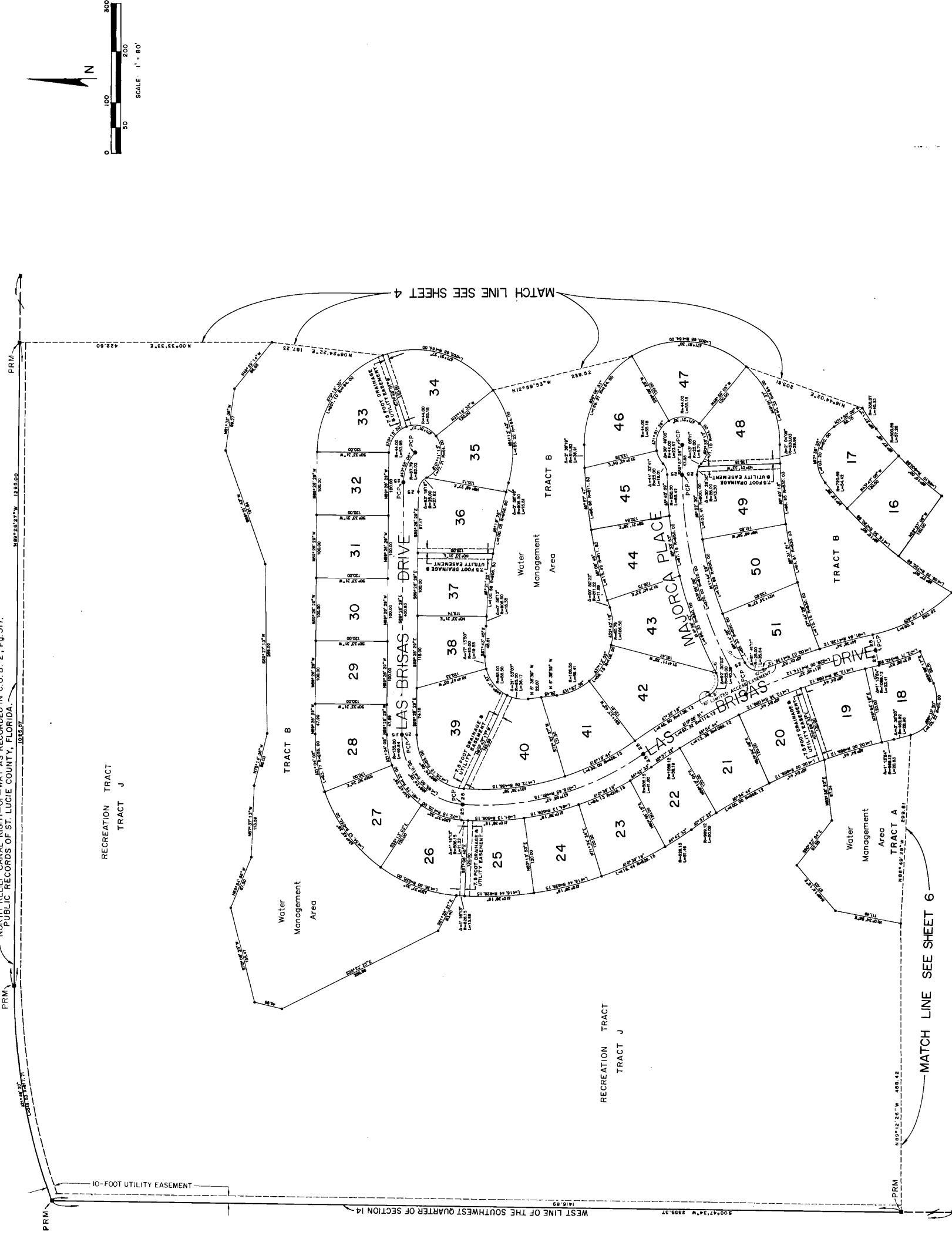


RIVER CLUB
A SUBDIVISION
IN
SECTIONS 14, 23 & 24, TOWNSHIP 32S., RANGE 39E
INDIAN RIVER COUNTY, FLORIDA

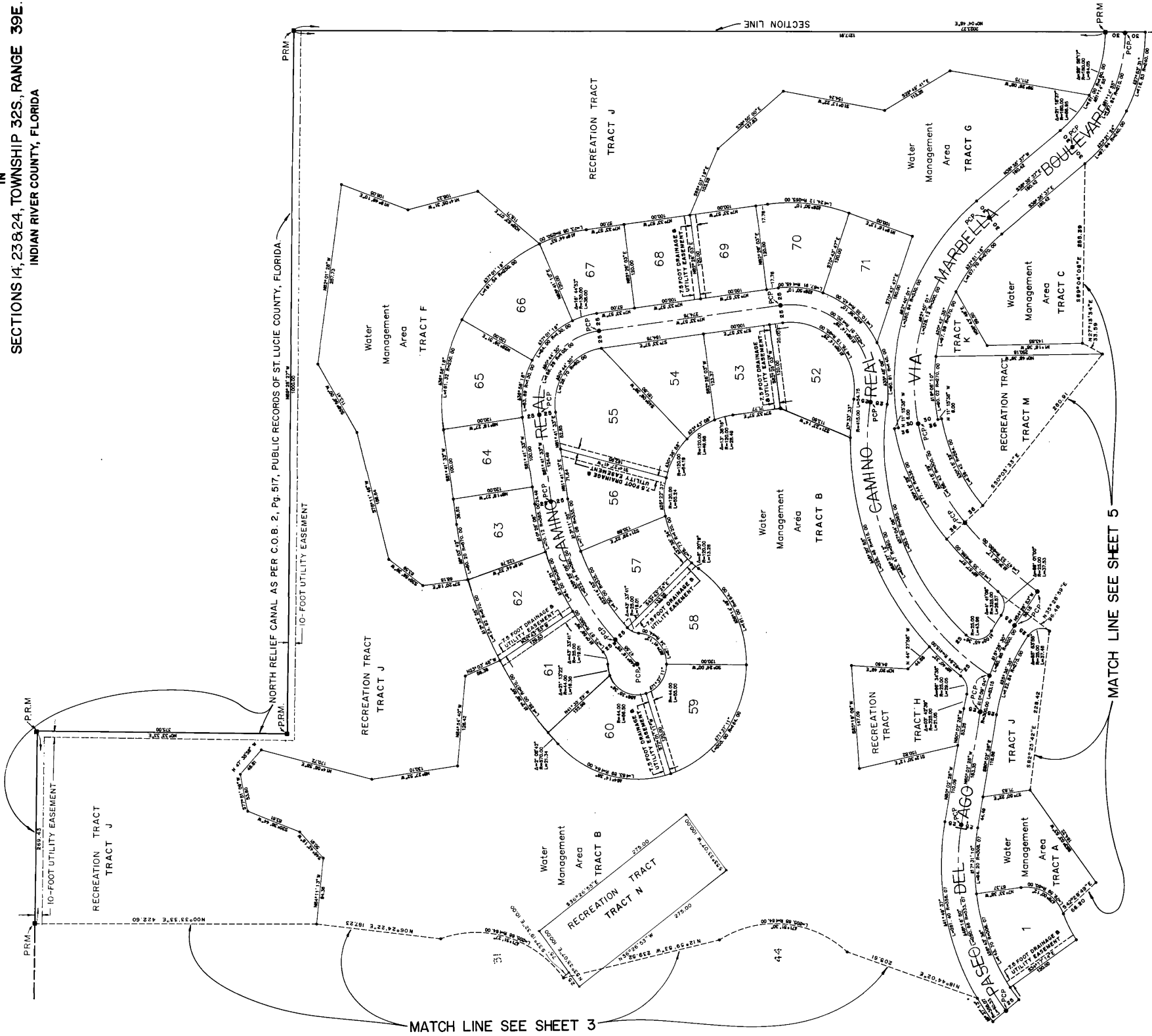
PRM
NORTH RELIEF CANAL RIGHT-OF-WAY AS RECORDED IN C.O.B. 2, Pg. 517.
PUBLIC RECORDS OF ST. LUCIE COUNTY, FLORIDA.



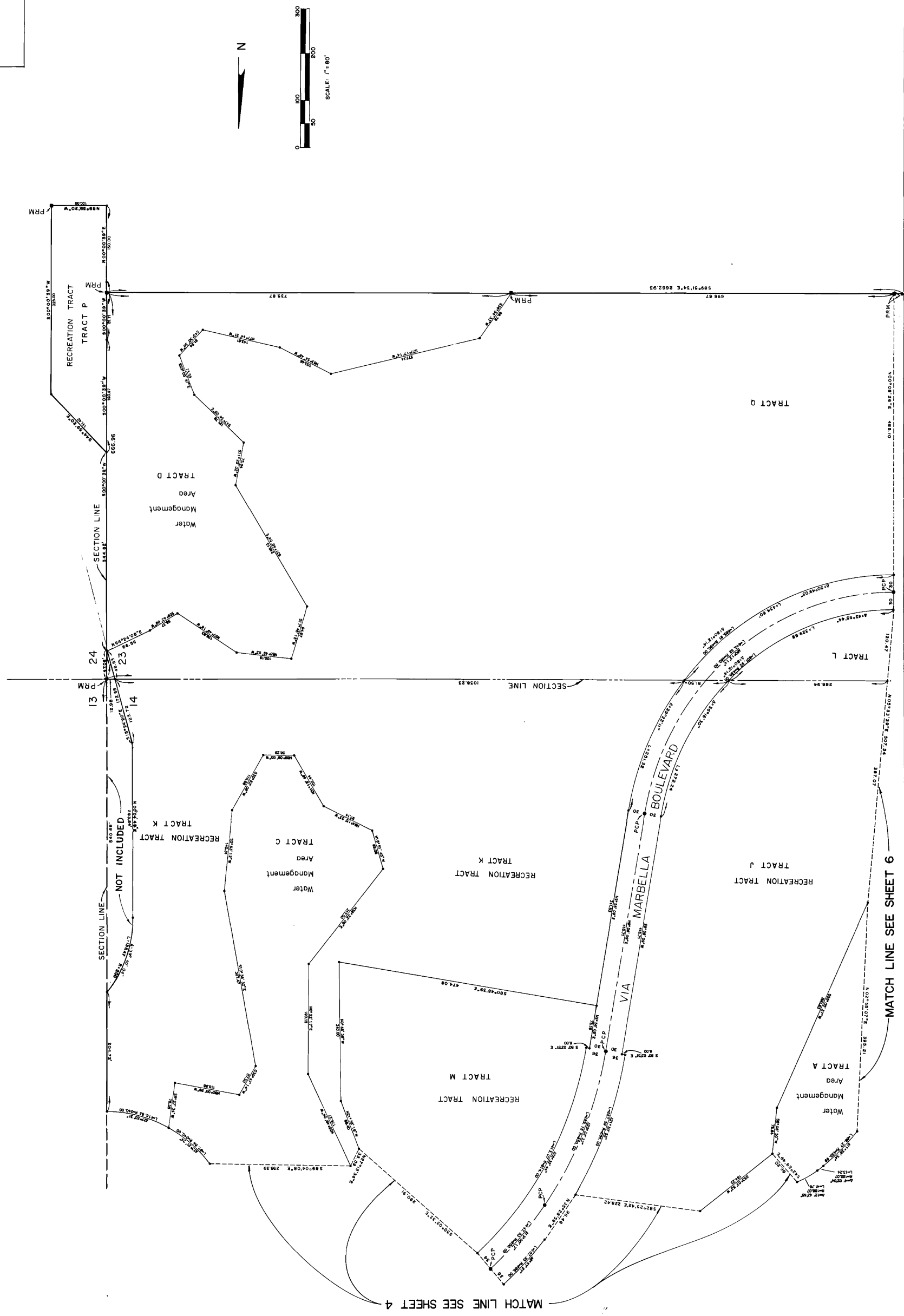
RIVER CLUB

A SUBDIVISION

IN
SECTIONS 14, 23 & 24, TOWNSHIP 32S, RANGE 39E.
INDIAN RIVER COUNTY, FLORIDA



RIVER CLUB
A SUBDIVISION
IN
SECTIONS 14, 23 & 24, TOWNSHIP 32S., RANGE 39E.
INDIAN RIVER COUNTY, FLORIDA



RIVER CLUB

A SUBDIVISION IN

SECTIONS 14, 23 & 24, TOWNSHIP 32S., RANGE 39E.
INDIAN RIVER COUNTY, FLORIDA

